

1310nm FP-LD 1.25Gbps Modules with Receptacle

SFLR31L Series

Features :

- Uncooled 1310nm Fabry-Perot MQW Laser Diode,
Built-in InGaAs PD Monitor
- High-Speed Operation Up to 1.25Gbps
- Wide Operating Temperature Range: -40 ~ +85
- Laser Welding Assembly Method
- High Reliability and Long Operation Life
- Various Connector Type: SC, FC, ST



Application :

- Transceiver Module
- Data Communication
- Telecommunication
- Gigabit Ethernet

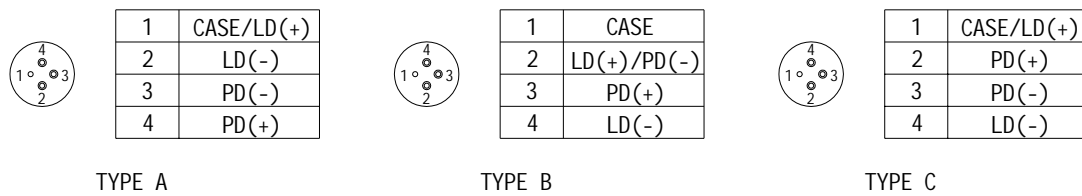
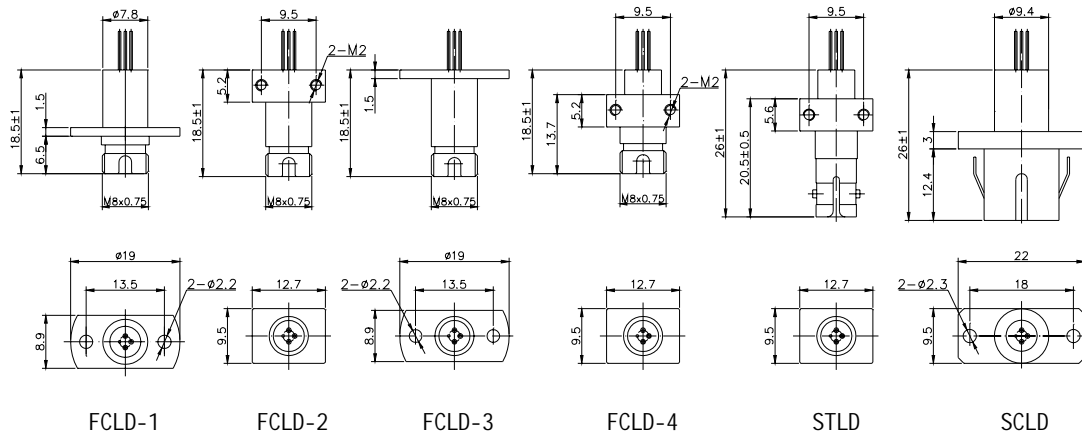
Absolute Maximum Rating:

Parameter	Symbol	Min.	Max.	Unit
Operating Temperature Range	T _{op}	-40	+85	
Storage Temperature Range	T _{stg}	-40	+85	
Soldering Temperature T _{max} = 10s	T _s	-	260	
Optical Output Power	P _o	-	4	mW
LD Reverse Voltage	V _{rl}	-	2	V
PD Reverse Voltage	V _{rd}	-	10	V
PD Forward Current	I _{fd}	-	1	mA

Optical and Electrical Characteristics: (T_c=25 °C)

Parameter	Symbo	Min.	Typ.	Max.	Unit	Test Condition
Threshold Current	I _{th}	-	10	15	mA	CW
Forward Voltage	V _f	-	1.2	1.5	V	CW , I _{th} +20mA
Optical Output Power	P _o	-	-	0.6	mW	CW , I _{th} +20mA
		0.6	-	1.0		
		1.0	-	-		
Center Wavelength	c	1290	1310	1330	nm	CW , I _{th} +20mA
RMS Spectrum Width		-	1.0	3.0	nm	CW , I _{th} +20mA
Rise and Fall Times	T _r / T _f	-	-	0.3	ns	I _f = I _{th} , I _{th} +20mA, 10-90%
Tracking Error	TE	-	-	± 1.5	dB	APC , -40~+85
PD Monitor Current	I _{mo}	100	-	-	uA	CW , I _{th} +20mA , V _{rd} =1V
PD Dark Current	I _d	-	-	0.1	uA	V _{rd} =5V
PD Capacitance	C _t	-	10	15	pF	V _{rd} =5V, f=1MHz

Mechanical Dimension and Pin Assignment



Order Information

